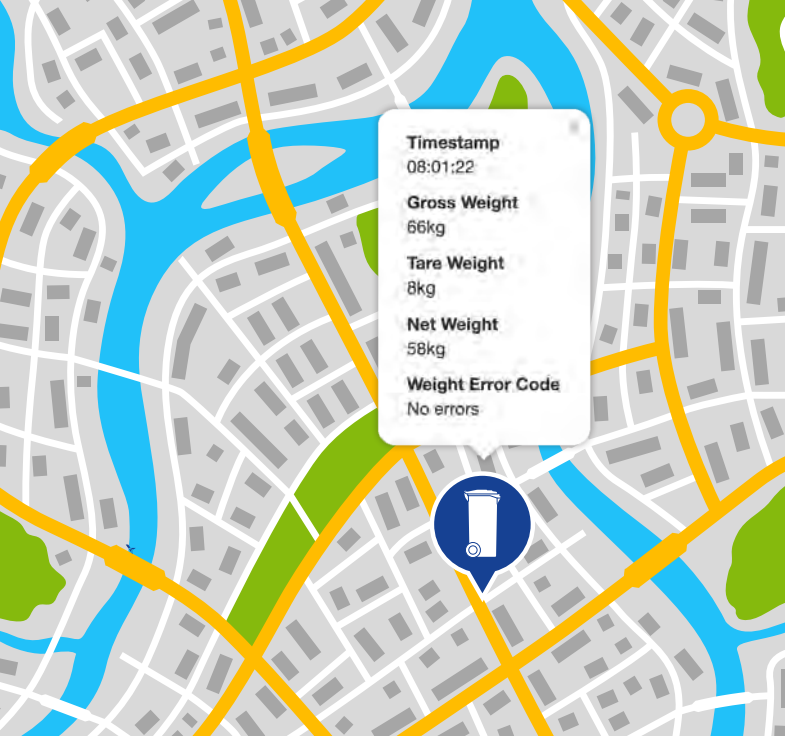


CONNECT

REMOTE, REAL-TIME DIGITAL
COLLECTION EQUIPMENT MANAGEMENT



Terberg Connect represents a world first in the waste management industry by embracing Internet of Things (IoT) and Industry 4.0 technology to enable true two-way remote diagnostic and servicing activities on all key components of the complete waste collection vehicle.

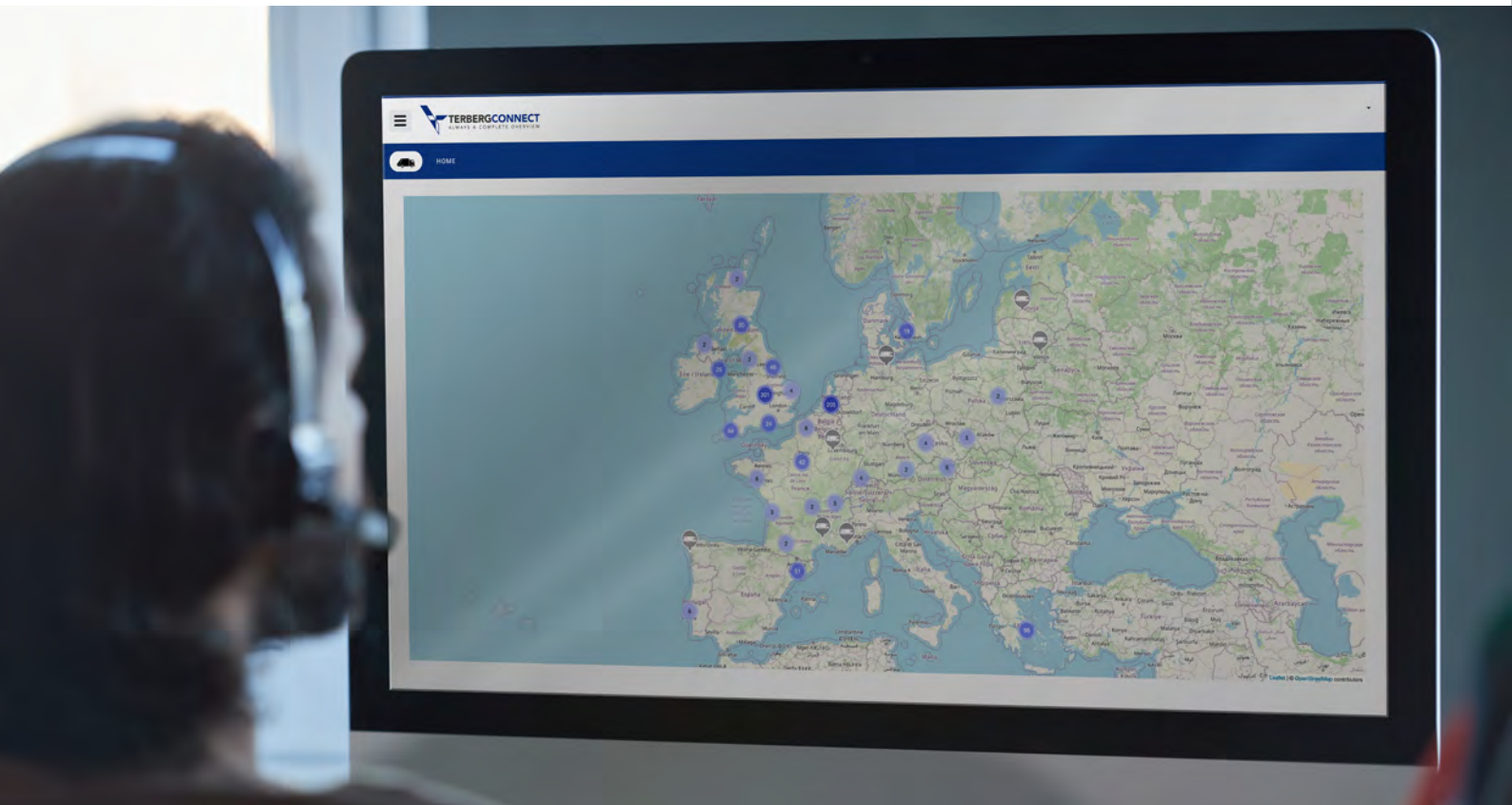


REAL-TIME ALERTS FOR EVENTS SUCH AS ENGINE OVERHEATING, LOW OIL LEVELS AND OTHER DISTRESS MEASURES.

Facilitates live intervention for occurring problems to deliver downtime reduction and faster repair possibilities.

INCREASES FIRST-TIME FIX RATES BY MORE ACCURATE DIAGNOSIS OF ROOT CAUSES

Lowers down time and your total Cost of Ownership/ Operation by optimal fleet use.



WEIGHING DATA

Possibility of implement Pay as you Throw program. Terberg Connect delivers accurate and certifiable weighing and/or RFID information from your fleet to our systems and yours via our API to facilitate Pay As You Throw systems.

ACCESSIBLE ON ANY DEVICE

No additional investment in extra hardware needed.

EVENT REPORTS

Built-in custom event reporting allows proactive daily fleet deployment to help you reach optimal efficiency.

ANYWHERE IN THE WORLD

Our unified system allows management of international fleets from your device or desk helping you reduce costs, your carbon footprint and environmental impact.



TRUE TWO-WAY COMMUNICATION WITH YOUR FLEET AN INDUSTRY FIRST

Terberg Connect spreads a net of connectivity across the vehicle chassis, body, bin lift system and, where fitted, the weighing and identification system to allow interaction via an intuitive online user interface accessible from anywhere in the world and on any device.

Real time fleet management, resulting in optimal use of the fleet: high efficiency, lower costs.

- Fleet Management with snail trail
- Remote in depth diagnose
- Dashboard with most important Statistics
- Real time location of your vehicle

INTUITIVE ONLINE USER INTERFACE

Accessible and short learning curve for all competence levels, requires little previous knowledge.

DIGITAL TWIN REPRESENTATION OF VEHICLE COMPONENTS

Visual diagnosis simplifies fault-finding to reduce downtime and offers efficient repair possibilities. Our UI employs digital twin technology allowing us to reimagine and present a virtual counterpart of the physical hardware on screen. We display real-time information from over 300 signals from all key components.

PROACTIVE FLEET MANAGEMENT AND ADJUSTMENT

Helps you prevent possible issues and act on current ones for your fleet deployment.



ROBUST AUTOMOTIVE STANDARD HARDWARE

Terberg Connect hardware is extremely durable, constructed in accordance with automotive specifications, certified to operate from -40°C to 85°C with an Ingress Protection rating of IP67 and is EMC tested.

The hub of our vehicle network is the Terberg Connect module serving as a communications and data processor for each component, allowing us to reimagine this onscreen with digital twin technology. The Terberg Connect module collates, processes and transmits data over a 4G or 5G wireless network to our client's chosen server.



ULTRA SECURE AZURE CLOUD DATA, CERTIFIED TO ISO 27001

We place ultimate importance on digital security to give the best protection for your data, we guarantee the confidentiality, availability and the integrity of your information.

CUSTOM API ALLOWS INTEGRATION WITH FLEET MANAGEMENT AND BACK OFFICE REPORTING SYSTEMS

Terberg Connect plays nicely with others via our custom APIs to deliver real-time data to your systems for further round efficiency analysis, driver behaviour reporting and much more.



TERBERG ENVIRONMENTAL

Newtonstraat 2, 3401JA. IJsselstein, The Netherlands

T +44 (0)1925 458 500, E info@terbergenvironmental.com, I www.terbergenvironmental.com

We reserve the right to carry out technical modifications. Modification of specifications may be carried out without prior notice. Illustrations may not necessarily depict current equipment versions.